

Find out
about our
modular offer

myclimate
Service Packages

Set Ambitious
Climate Goals

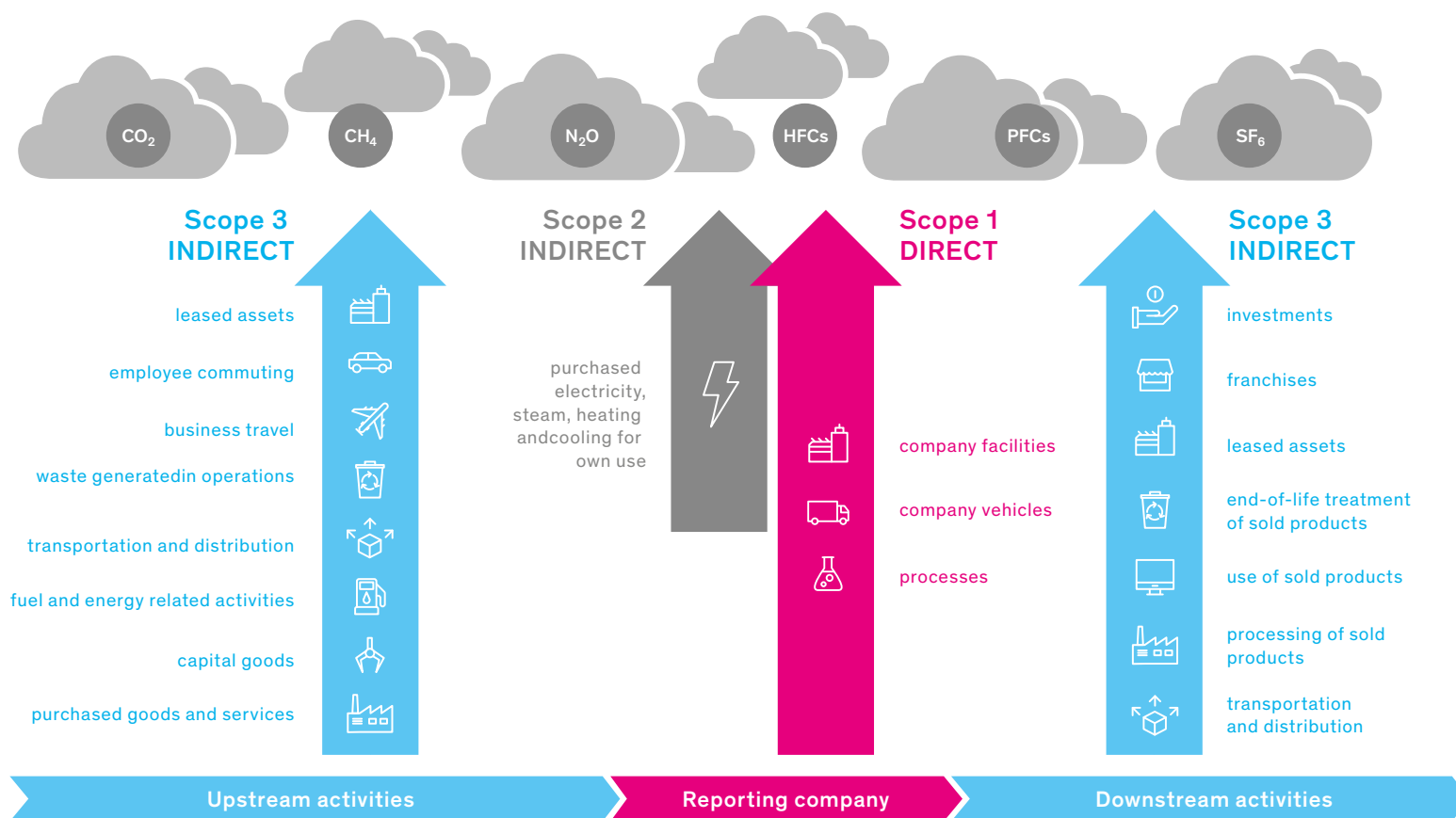
Consulting on Science-Based Targets

What is the Science-Based Targets Initiative (SBTi)?

Within the context of the Science-Based Targets initiative (SBTi), companies undertake to set themselves science-based climate targets, or SBTs. These CO₂ reduction targets must be in line with the requirements of the Paris Agreement to limit global warming to 1.5 °C. Objectives are based on internationally recognised standards, as well as the criteria and specifications of the SBTi. In October 2021 the initiative launched the Net-Zero Standard, a framework for determining long-term goals to achieve net-zero emissions. The SBTi validates company targets and communicates them on its platform.

The basis on which SBTs are developed is a company's full carbon footprint in accordance with the Greenhouse Gas (GHG) Protocol.

For SMEs (fewer than 500 employees) the SBTi offers a simplified solution.



myclimate

Consulting on Science-Based Targets

Where do Science-Based Targets Impact a Company?

Climate targets that are validated by the SBTi demonstrate a company's credible commitment to the climate and to limiting its warming. However, effective climate protection in a company involves more than just setting CO₂ reduction targets. It also includes concrete measures to enable such targets to be achieved.

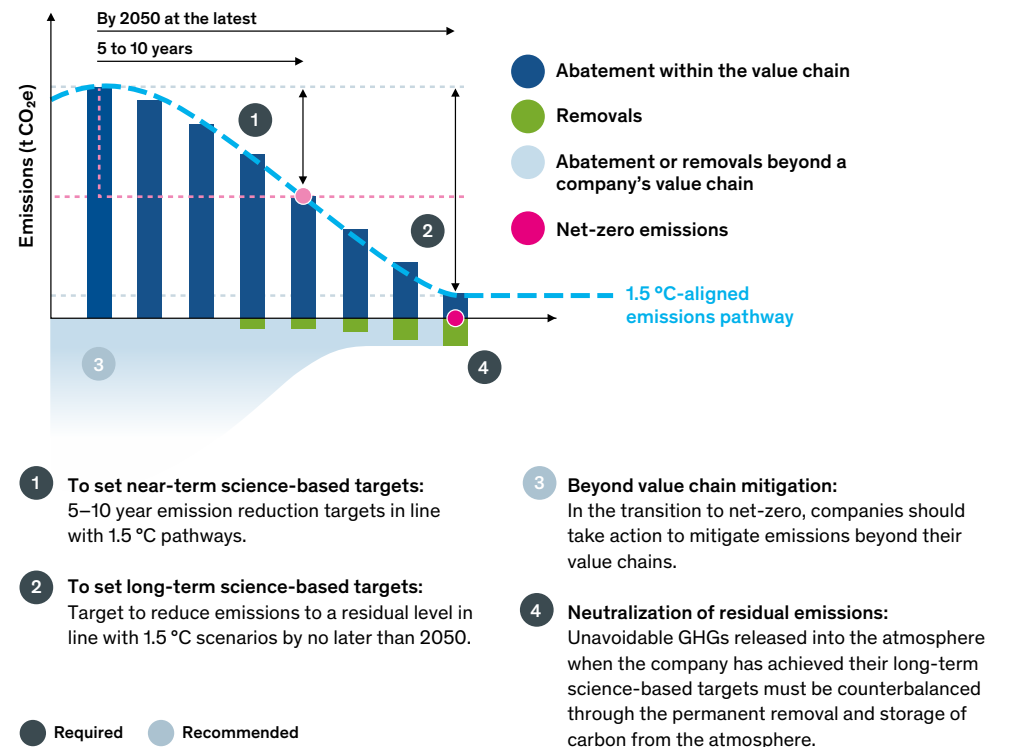
myclimate supports companies with the identification and development of such reduction measures. myclimate offers a broad choice of options for this purpose. These range from the evaluation of technical measures within a company's operations to the establishment of internal support programmes and the development of reduction programmes within the company's own value chain (insetting).

myclimate creates concepts and is available to assist with all aspects involved in the creation, establishment, review and further development of an individual climate strategy.

Your Benefits

- Competitive advantages
- Improved brand image & positioning
- Preparation for more ambitious regulations and CO₂ pricing
- Driver of efficiency & innovation
- Increased attractiveness on the labour market
- Climate protection is increasingly being considered in investment decisions
- Risk management
- Social responsibility of companies

Four key Elements make up the SBTi Net-Zero Standard Framework



Modular Offer for Science-Based Targets

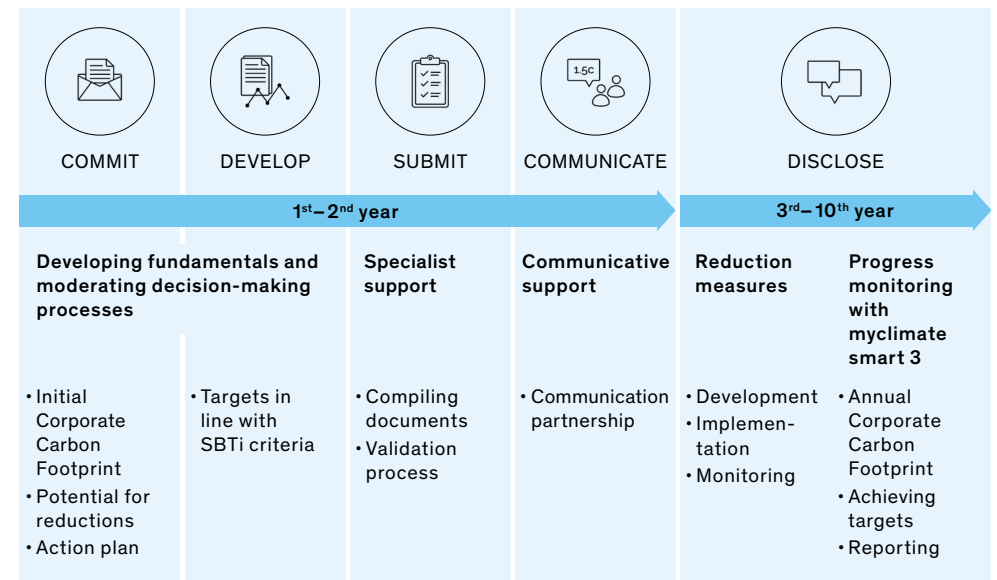
myclimate defines SBTs, prepares the necessary documents and guides companies through the process until validation is completed by the SBTi. myclimate can review existing climate targets and carbon footprints with little effort in terms of conformity with the SBTi criteria.

In an initial step, based on the result of the Corporate Carbon Footprint (CCF), myclimate assesses the reduction targets for scopes 1, 2 and 3 that are necessary for SBTi-compatible targets. These are presented in a workshop, and further action is developed jointly.

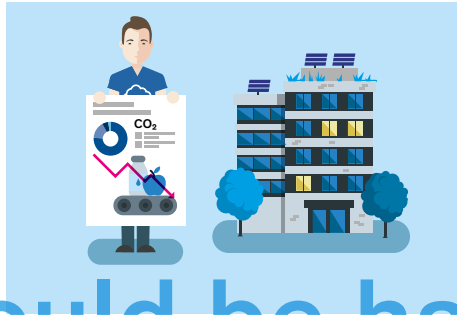
The collection of the data required for a CCF can be carried out via myclimate smart 3 (a web-based platform for standardised carbon footprints). Recurring data recording, within the context of annual monitoring for instance, can easily be realised in the same tool.



myclimate Service Packages for Science-Based Targets



myclimate offers expertise and experience in the individual steps, as well as in the overall process



We would be happy to support you on your journey to credible climate targets.

Our services have a modular setup. We will be glad to design and agree the scope with you in line with your needs.

Foundation myclimate
Pfungstweidstrasse 10
8005 Zurich, Switzerland
Tel. +41 44 500 43 50
info@myclimate.org
www.myclimate.org

myclimate Deutschland gGmbH
Kurrerstr. 40/3
72762 Reutlingen, Germany
Tel. +49 7121 317775-0
kontakt@myclimate.de
www.myclimate.de

